

EWI5000 setup for use with the DynaSample XPression or XpressO

If you are using the EWI5000 as a MIDI controller for the XPression or XpressO you will need to change a number of parameters on the EWI5000. The EWI5000's default settings will not work well (out of the box or after a reset) with the XPression.

(Most of this is true for any other external sound generator as well.)

BEFORE STARTING EXECUTE A RESET TO THE FACTORY DEFAULTS *(p. 37 of the EWI5000 User Guide)*

- 1) Turn off High Resolution for breath.

High Resolution is not only superfluous it also uses too much MIDI bandwidth and can therefore have a negative impact on the MIDI timing in general.

The XPression might give you some extremely loud noise in case you have CC7 on high resolution. (This won't happen if you have CC39 filtered in [Utility] "Global MIDI CC Remapping")

Most of the unnecessary and problematic CCs should be filtered if you have the latest software version of the XPression (v1.2.06 beta 38 or higher).

For this reason after updating the XPression it is recommended to reset your XPression to the default settings for your wind controller. (New instruments are already set up like this.)

Go to [Utility] / "internal Backup – all Settings and Maps" and restore all settings for your controller. This will filter all unnecessary or interfering CCs (like bank changes, etc.).

Alternatively you can copy the map "minimal" to your current (by default "all") CC Remapping map.

- 2) The XPression uses only CC2 (breath) as a dynamic controller. All other CCs for breath must be turned off! CC7 (main volume) can cause a bad dynamic response while aftertouch causes pitch issues. CC11 (expression) only wastes bandwidth.

- 3) Using CC1 on the bite controller uses the XPression's own EWI style vibrato which has the advantage that it can also be used for slower vibrato than the EWI's bite vibrato.

It can also be remapped to other functions per preset without changing any settings on the EWI5000.

If the EWI5000 is set up for bite vibrato it cannot be used for anything else and it will interfere with the auto portamento feature of the XPression. Auto portamento needs to be disabled in this case.

- 4) The default calibration of the EWI5000 cannot produce a usable velocity.

However, the XPression needs a reliable velocity for adjusting the attack of the wind and string instruments as well as the synth sounds. Of course all percussive instruments like pianos, mallets, guitars, etc. depend exclusively on velocity for their level - on any sound generator!

While this used to be working perfectly out of the box on all previous EWIs it needs some extra settings that are not corresponding to the EWI5000 default settings.

Here are the most important tweaks that you will have to apply:

- a) Set Ct (Capture Delay) to "5". The default of "3" is too short. (EWI5000 manual page 16)

- b) Breath Sensor Calibration (page 23):

- set the breath sensor rate to "99" (reverb knob)
- the sensitivity (chorus knob) to -10 to -20 below the threshold where the led starts lighting up (I have mine set to 45 at a threshold of 64).
A value that is closer to the threshold will lower the velocity randomly.
- the dynamic range (lfo knob) is up to you - depending on the feel that you want (I have mine set to 84). Make sure to test the velocity with your personal settings.

Test:

If the calibration is correct you should be able to play a piano sound with a perfect velocity and without any missing notes - no matter whether you play staccato or legato.

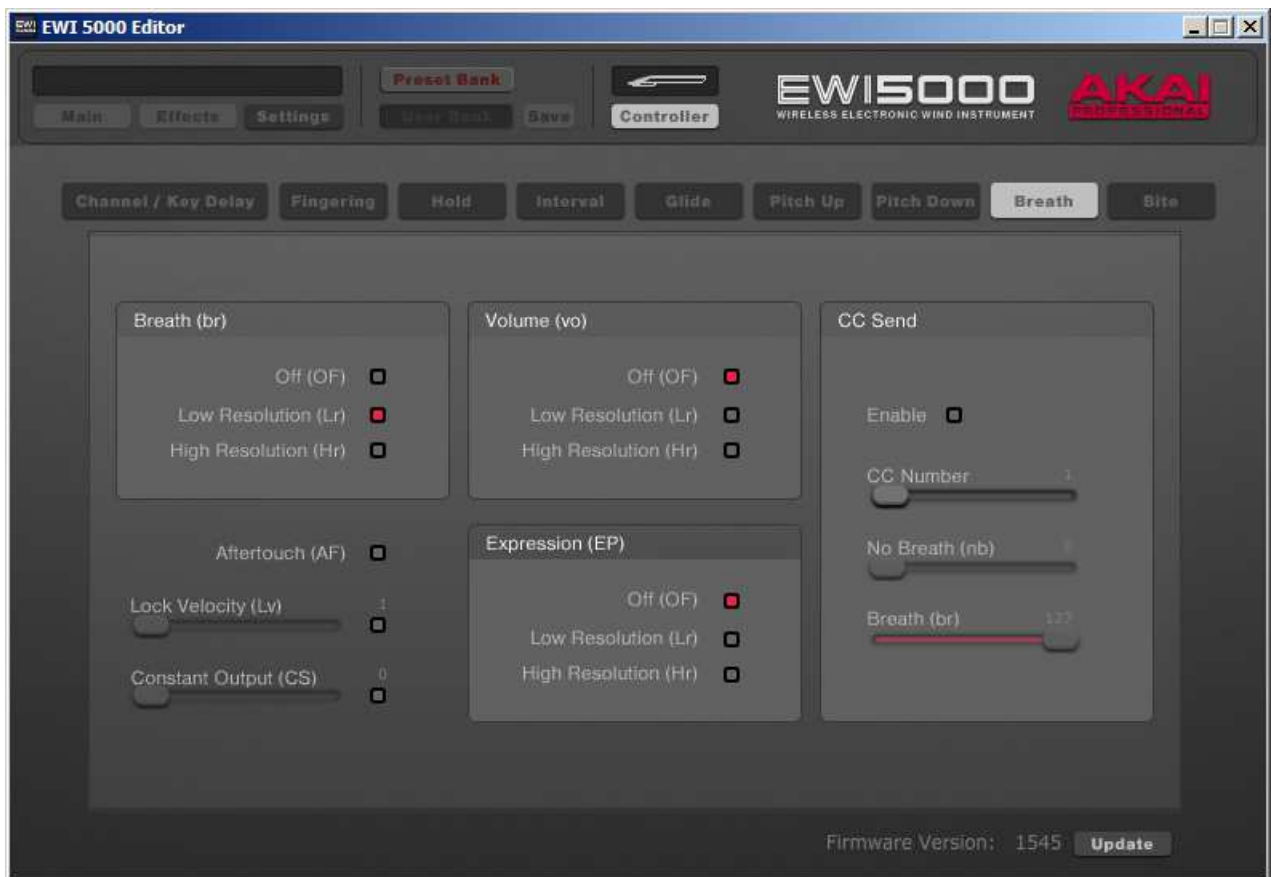
If you get dropped notes on a piano you need to continue tweaking your settings.

- 5) Set the EWI key delay not any lower than 7 or 8 to avoid dropped or stuck notes caused by several notes being sent at once on each fingering change.

Once these things are set up correctly your EWI5000 should be working great as a MIDI controller with the XPression/XpressO (or any other sound module / software synth)!

Don't forget to write your calibration settings down while you're doing it as there is currently no way for saving or recalling the values of your settings later ... :-(

Here is a screenshot of how your Breath Setup should look like:



And here's the Bite Controller setup:

